




Art. No: **HP3000**

 Bracket for mounting our platform HP2030 on barracks without fork pockets

 Hot dip galvanized.


 To be mounted on the barracks steel frame

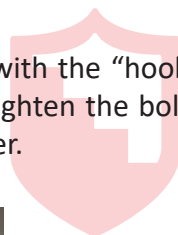
 Designed for std platform HP2030




Assembling

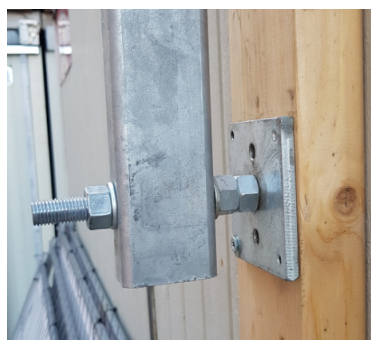
Step 1

 Mount the beamadapter under your barack with the “hook pipes” facing out from the barack, centered to the door. Tighten the bolts hard on the frame. Then lift your barack on top of the other.



Step 2

 Hang the angled consoles in the “hook pipes” and level it using the adjustable feet, its advantageously to distribute the force from the console using wood as support against the lower barracks wall.



Step 3

Now follow the instructions to assemble the platform and stairs.

Step 4

Lock the platform on your brackets using the provided U-Bolts and mount your hand-rails.

**Step5**

Mount your staircase and handrails on your construction, make sure you lock and tighten everything before entering the stairs or platform. Now you have a ready and stable acces to your upperfloor barack.